



Des Moines WoodTurners

Monthly Meeting Announcement and other Chapter News

January 2020 AAW Chapter 158 **A 501(c)(3) Non-profit Organization** **Bulletin 2020-01**

Our next **DES MOINES WOODTURNERS MEETING (AAW Chapter 158)** will be Saturday, January 11th, 1:00 pm, at the Woodsmith Store, 10320 Hickman Road, Clive, IA. See you then...



JANUARY'S PROGRAM: Dera Bureson

Dera Bureson is a local commercial photographer. She has been working for Meredith Corporation for the past three years and will teach you all a few tips and tricks in capturing and editing great images of your projects. She will mostly focus on cell phone cameras and their usages, but you certainly can take some pointers back with you to your digital cameras! She will show you example photos of what an average person may think is a 'good' photo of wood related projects and then show you what she would do as a professional that might help you capture beautiful images of your projects!

NEW MEMBERS - Please welcome **Mike Gieszler** of Ankeny

SHOW 'N TELL - Plan to bring your projects or "in progress" items to show (or ask about) regardless of your current skill level. Members who brought a project in November were **Del Krammersmeier, Rich Voss, Nan Sloan, Jack Kennedy, Don Skarin, Jack Rolison, Dave Yearian, Rob Wallace** and **Tom Whalley**.

2020 MEMBERSHIP DUES DEADLINE IS JANUARY 11th!

by Dick Meuler, Membership Database

Final date for dues payment is the January 11th meeting. Consider mailing in your dues payment today or pay in person at our January 11th meeting at Woodsmith. Because of our fund-raising efforts at the Iowa State Fair, our annual dues renewals are able to stay at the incredibly low \$20 a year. Over half of our members have already renewed.

At the meeting, you can pay dues by cash, check or credit card. We accept Master Card, Visa, Discover and American Express. All members who joined the chapter since the start of our summer break are already paid up for next year. If paying by mail, send a check or other form of money transfer. **DO NOT MAIL CASH.**

It's important to note that you can renew your dues for 1,2,3,4 or 5 years if you choose. Many have paid for multiple years in advance. Mail dues to **Dick Meuler**, Des Moines Woodturners, 10050 NE University Ave., Runnells, IA 50237. Make checks payable to Des Moines Woodturners. If questions, call or text Dick at 515-991-8111.

DECEMBER'S PROGRAM: Tom Whalley and Will Zitterich

Members **Tom Whalley** and **Will Zitterich** presented a topic of using faceplates and jamming chucks in woodturning. Tom demonstrated threading a faceplate with a threading tap while manually turning the tap to cut the 1 ¼ x 8 threads which are the same as larger lathes. He also showed the process for threading a ¾ x 10-inch thread which matches the thread on the tail stock center.

Will Zitterich displayed a number of lathe attachments that are available to make turning procedures easier and expand a turner's abilities. He demonstrated cutting the 1 ¼ x 8 thread by cutting it by hand using the tap and a wrench on a wood blank. He then used it as a faceplate to facilitate removal of a tenon on a bowl. He also turned a faceplate to match a walnut bowl rim to aid in removal of the tenon and used a jamming chuck to remove the tenon on another bowl. Will also used two faceplates to make a box top fit more tightly on the box bottom.

CRITIQUING YOUR WORK - If you would also like to have any of your items critiqued, stop by the **Critique Table** after our monthly Chapter meeting. By providing you a helpful critique, it's hoped this will provide feedback to improve your future work and assist you in developing new ideas. Without constructive feedback, you are not only destined to repeat past mistakes but also not to see new ways to improve your work. As always, this is strictly voluntary.

JANUARY'S NETWORKING EVENT

Since the December networking event was the same day as Christmas, we did not have one. However, we will once again be at the scout center on **Wednesday, January 22, 2020**, at the Fred Maytag II Scout Center from 9:30 till 11:00. Remember, we need good turning blanks for sale, as well, so if you have some you are willing to donate, please bring them with you. The wood sales will start at 9:45. Also be sure to ask for a **FREE** drawing ticket at the cashier table when you arrive, but just one per member. We always have great door prizes. With no program, you're able to meet other woodturners and visit in an informal setting over a cup of coffee and donuts. Members are also encouraged to bring in projects for feedback or turning tools you may have usage questions about. This event is for you to get your questions answered. As always, questions and problems brought before those present will likely bring you a variety of ~~correct answers~~ "opinions". If you have a friend interested in woodturning, please bring him/her along.

Come as often as possible. We'll continue the event if members show interest through their attendance. Watch each month for your e-mail reminder. As always, guests are welcome, too. For more information and map of where the Scout Center is, go to http://www.dmwoodturners.com/?page_id=500.

TURNING CLASSES

If you would like to put your name on the list for future basic spindle turning classes, or would be interested in attending other classes, please send an email to **Rob Beattie** at educ@dmwoodturners.com. Indicate if you are interested in the Basic Spindle classes or a bowl class (provided you have already taken the basic spindle class). Let him know another interest for a class you might like to take. Why not get started on the right foot by learning some woodturning techniques from our outstanding training team? As an additional incentive, all classes are now using our new Jet 1221 variable speed lathes.



WOODTURNERS LIBRARY NEWS – Thanks to **Don Skarin** and **Tom George** for volunteering to operate the library. A listing of our entire library contents can be found on our web site at: http://www.dmwoodturners.com/?page_id=84. It also shows the replacement cost for material not returned. Remember, **RETURN ALL CHECKED OUT MATERIAL TO OUR LIBRARY VOLUNTEERS** in the Woodsmith seminar room on

Saturday meeting days, or, give it to **Tom Whalley** or **Dick Meuler** during the Scout Center meetings. Leaving them anywhere else may result in lost material and replacement cost fees. By the way, do **you** have some items you are no longer using that other turners might enjoy? If so, bring them Saturday and donate them to our library. What you donate might be just what someone else was looking for, so please bring them with you to the next DMWT Chapter meeting.

If you SEE something, SAY something

..Bring a friend, neighbor or co-worker you think might enjoy woodturning..

MEMBER BUY-SELL SERVICE

Do you have woodturning or woodworking related items you want to buy or sell? Send an e-mail with particulars including prices you want pres@dmwoodturners.com and Tom will send a notice out to all members with their e-mail addresses on record.

For Sale. Member **Jack Rolison** has a complete Wolverine grinding system including the skew attachment for \$100. You supply your own grinder. Call Jack at 641-683-5647. (Ask him about the walnut slabs he is selling, too)

2020 DUES RENEWALS (still only \$20) – DEADLINE IS JANUARY 11!

(If you joined the Chapter after Jun 15th of this year, your dues are paid for 2020)

Pay for up to five years in advance. Make Checks Payable to: [Des Moines Woodturners](#)

Mail dues payment to Dick Meuler, Des Moines Woodturners, 10050 NE University Ave., Runnells, IA 50237

MENTOR PROGRAM

Please consider using our Mentor Program. Each mentor's strengths are noted along with their name and city location. Select who might be best to contact, based on your questions and how far they are from you. As volunteers, it will be up to the mentor to decide if they can help, whose shop will be used and what mentoring will look like based on the need. For more details about the program, go to: https://www.dmwoodturners.com/?page_id=1241.

CHUCK DOWLER MEMORIAL WOODTURNING SCHOLARSHIP

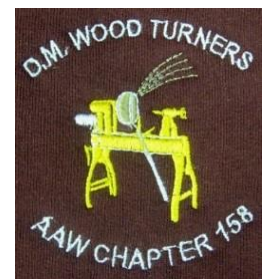
This scholarship is offered to those serious about woodturning who are willing to expand their skills and knowledge and bring those skillsets back to share with our members in a variety of ways – just as Chuck Dowler did. For more details about this program and/or to apply, go to: https://www.dmwoodturners.com/?page_id=1351. The 2021 application **deadline to apply will be Nov 14, 2020, the day of the November meeting.**

PROGRAM IDEAS

One of the biggest benefits of your Des Moines Woodturners Chapter membership is the value you receive by attending the monthly meetings and enjoying an informative program. If you have any thoughts or ideas about a program topic you or our members could benefit from, please Dave Rabe. He can be reached at 641-680-1129 or by email at prog@dmwoodturners.com. Chances are if you are interested, others probably would be as well. Please let Dave know what you would like to see.

DES MOINES WOODTURNERS WEARABLES

Members wanting Des Moines Woodturners logos embroidered on clothing are advised to purchase shirts, sweatshirts or turning smocks of their choice and style. These must be BRAND NEW and UNWASHED and can be delivered to any officer or board member. When enough are collected to meet minimums, they will be taken to the embroiderer? Be sure to attach a note with your name to the collar of each garment submitted indicating if and how you want your name embroidered along with the Chapter logo. Costs to add the standard logo are \$8.00 per item. Personalized names can also be added for an additional \$6.00 per item. To learn more about this program, go to https://www.dmwoodturners.com/?page_id=596 or chat with **Rob Beattie** if you have questions by calling 515-282-4532 or beattie.r@mchsi.com.



WOODSMITH PARKING - PLEASE REMEMBER

When arriving at Woodsmith Saturday, park at the far East and North sides of their parking lot. This leaves the areas closest to the entrance door for their normal Saturday store customers. If you have items to drop off for our meeting, drop them at the entrance and then go park in the designated areas. Woodsmith is gracious to let us use their facility. Please respect their parking rules so customers have easy access to the store on one of their busiest days of the week.

Thanks for your continued cooperation

Meet the Officers and Volunteers

that work behind the scenes helping to make our Chapter successful...

Des Moines Woodturners, Inc.

E-mail: dmwoodturners@gmail.com

Web: <http://www.dmwoodturners.com>

2019 BOARD OF DIRECTORS

President	Tom Whalley	515-321-6323
Vice President	Will Zitterich	515-232-1765
Treasurer	Tom Baker	515-249-7503
Secretary	Donna Byers	515-360-5894
Director	Jim Reynolds	515-225-8514
Director	Tad Tadlock	515-201-7403
Director	Stan Merrell	515-491-5411

Membership Brochure – Click Link

http://www.dmwoodturners.com/?page_id=399

2019 CHAPTER VOLUNTEERS

A-V Producer	Tom Baker *
Cameras	Tom Baker Craig Wyckoff
Greeter	Vikki Morain
Assist/BU	Donna Byers
Librarian	Don Skarin
Assistant	Tom George
Mentoring	Will Zitterich
Maintenance	Dave Yearian Leroy Monson
Membership	Dan Carlson Dick Meuler *
Segmenting SIG	Jack Kennedy
Newsletter	Tom Whalley
Photographers	Gil Lea George Takacs
Refreshments	Tad Tadlock * Dan England Dan Carlson
Programs	Dave Rabe Jim Reynolds Brian Simmons
State Fair	
Webmaster	Jim Bergeson

*Training Team Instructor

...but we could still use your help

HOW CAN YOU VOLUNTEER?

What can you do to help make us better?

Please send your thoughts or
Ideas of what you can do to:
pres@dmwoodturners.com

What's Ahead – Chapter and Related Activities

Here's what's happening this month...

HAPPY 2020!

☒ Sat, Jan 11, 2019 – Des Moines Woodturners Chapter meeting and demo at The Woodsmith Store, 1:00 p.m.

Program: Dera Bureson from Meredith on photographing your works.

☒ Tues, Jan 14, 2019 – Des Moines Woodworkers Association - meet at The Woodsmith Store at 7:00 p.m.

☒ Wed, Jan 22, 2019 – Des Moines Woodturners Informal Networking meeting from 9:30 – 11:00 am. Boy Scout Center, 6123 Scout Trail, Des Moines (1st building south of Loffredo Produce off SW 63rd St.)

☒ Sat, Feb 8, 2019 – Des Moines Woodturners Chapter meeting and demo at The Woodsmith Store, 1:00 p.m.

Program: Rob Wallace presenting "A (much) Closer Look at Woodturning Tool Technique: Connecting with the Wood"

☒ Tues, Feb 11, 2019 – Des Moines Woodworkers Association - meet at The Woodsmith Store at 7:00 p.m.

☒ Wed, Feb 26, 2019 – Des Moines Woodturners Informal Networking meeting from 9:30 – 11:00 am. Boy Scout Center, 6123 Scout Trail, Des Moines (1st building south of Loffredo Produce off SW 63rd St.)

☒ Tues, Mar 10, 2019 – Des Moines Woodworkers Association - meet at The Woodsmith Store at 7:00 p.m.

☒ Sat, Mar 14, 2019 – Des Moines Woodturners Chapter meeting and demo at The Woodsmith Store, 1:00 p.m.

Program: Jack Rolison - Subject includes creating a lattice lid design and possibly how to create a spiral stem.

☒ Wed, Mar 25, 2019 – Des Moines Woodturners Informal Networking meeting from 9:30 – 11:00 am. Boy Scout Center, 6123 Scout Trail, Des Moines (1st building south of Loffredo Produce off SW 63rd St.)

☒ Sat, Apr 11, 2019 – Des Moines Woodturners Chapter meeting and demo at The Woodsmith Store, 1:00 p.m.

Program: Jack Kennedy - Presenting the segmenting process.

☒ Tues, Apr 14, 2019 – Des Moines Woodworkers Association - meet at The Woodsmith Store at 7:00 p.m.

☒ Wed, Apr 22, 2019 – Des Moines Woodturners Informal Networking meeting from 9:30 – 11:00 am. Boy Scout Center, 6123 Scout Trail, Des Moines (1st building south of Loffredo Produce off SW 63rd St.)

Have you had any of these changes?

PHONE NUMBER change?

E-MAIL ADDRESS change?

MAILING ADDRESS change?

Send changes to dmeuler@gmail.com

or call Dick at: 515-991-8111

2020 Iowa State Fair – August 13 – 23, 2020
(215 days until the fair starts)

CHAPTER DIRECT WEB LINKS – Below are a few direct links to our Chapter web site.

- 🔗 Mentor Program - https://www.dmwoodturners.com/?page_id=1241
- 🔗 Chuck Dowler Memorial Woodturning Scholarship - https://www.dmwoodturners.com/?page_id=1351
- 🔗 Woodturning Article and Plan Links - http://www.dmwoodturners.com/?page_id=90
- 🔗 Chapter Library contents - http://www.dmwoodturners.com/?page_id=84
- 🔗 Contact board members and volunteers - http://www.dmwoodturners.com/?page_id=126
- 🔗 Download Membership Application form - http://www.dmwoodturners.com/?page_id=399
- 🔗 Download or view Scout Center Networking Info - http://www.dmwoodturners.com/?page_id=500
- 🔗 View or download photos from meetings - https://www.dmwoodturners.com/?page_id=1417
- 🔗 Tree identification PDF from Rick Hutcheson - <http://www.dmwoodturners.com/wp-content/uploads/2019/11/Treelident.pdf>



-----BULLETIN BOARD-----

➔➔➔➔➔➔➔➔ **SAVE THE DATES** ⬅⬅⬅⬅⬅⬅⬅⬅

AAW ANNUAL INTERNATIONAL SYMPOSIUM SCHEDULE

Louisville, KY - 34th Annual International Symposium - June 4-7, 2020

Omaha, NE – 35th Annual International Symposium – July 15-18, 2021

DISCOUNT SUPPLIER INFO

Before they ring you up, show discount suppliers your **Des Moines Woodturners** membership card.

Woodsmith Store at 10320 Hickman Road, Clive offers 10% discount to members except for sale items and power tools or things with a cord. If you're in doubt, ask a sales associate. M–F 9 to 7, Sat 9-5, Sun 11-4. Phone: 254-9494



Acme Tools at 629 SW 9th St. in Des Moines offers a 10% discount to members except for sale items and power tools or things with a cord. If you're in doubt, ask a sales associate. M–F 7 to 5:30, Sat 8-5:30. Phone: 244-4189

Renewal by Andersen at 517 Railroad Ave. in WDM (Valley Junction) offers 5% discount on top of any other promotion(s) for home/business replacement windows and doors. Mon – Fri 8-5. Phone: 515-274-9700

Tandy Leather Factory at 5041 NE 14th St., (Des Moines) no longer offers organizations discounts since they have restructured their pricing. Current hours are 9 till 6 Mon thru Fri and 9 till 4 on Sat. Phone: 265-6521

True Value Hardware at 63rd and Grand in WDM offers a 10% discount on most non-sale items. If you're in doubt, ask a sales associate. Known for having nearly anything you'd ever want especially in hardware and fastener area. Hours Mon thru Fri 7 to 8, Saturday 7 to 6 and Sunday 9 to 5. Phone: 279-9905.

BUY LOCAL when you can, Mail Order when you have no other choice!!

Hartville Tool - <http://www.hartvilletool.com/> 800-345-2396 15% discount off regularly priced items but ONLY when purchasing direct from Hartville Tool at: www.hartvilletool.com, by phone or by mail. Free shipping on all orders, no minimum purchase. See following link for ordering instructions: <http://www.dmwoodturners.com/wp-content/uploads/2018/03/HT-Club-Discount-Program-Member-Buying-Instructions-NEW...pdf>

METRO HARDWOODS <http://www.metrohardwoodsinc.com/home.html> at 4243 S Noland Rd, Independence, MO 64055. 10% off hardwood lumber and plywood, pen kits and blanks and much more. Only valid for in-store purchases.

WOODCRAFT at 8645 Bluejacket Road, Lenexa, KS 66214, Phone: (913) 599-2800,

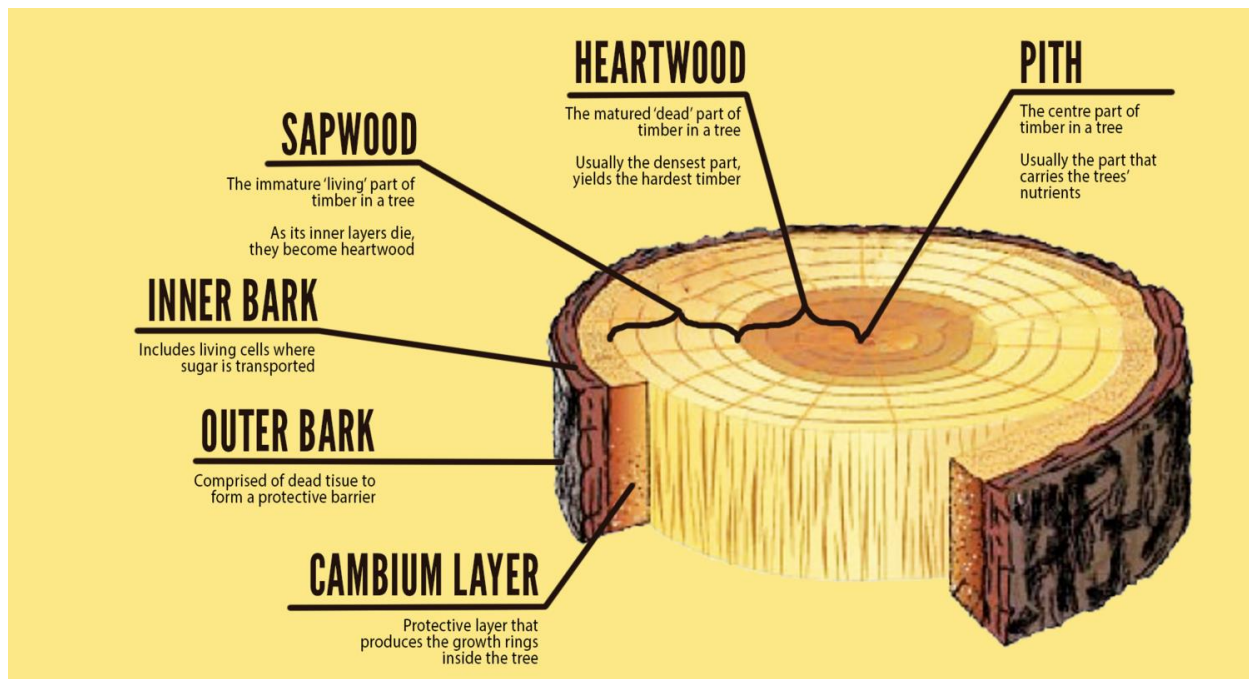
Email: Kansas-retail@woodcraft.com WEB: <http://www.woodcraft.com/stores/store.aspx?id=316>

10% discount supplier for woodturning tools, supplies & accessories not sold locally. Show your DMWT membership card in store for discount on most items except tools with a cord or battery and other selected premium and sale items. Only valid for in-store purchases.

UNDERSTAND THE TIMBER VOCABULARY

Now you might have chosen a hardwood or softwood, but how come pieces of the same species are different in color and price? Understanding which parts of the tree the timber comes from will help you understand these differences. Let's build up that vocabulary:

- **Heartwood:** usually darker in complexion and more dense. If your timber comes from this part of the tree, you may see some increased price differences between pieces of the same species. Heartwood is the part of the tree that is 'dead', meaning it has been matured and yields the hardest timber.
- **Sapwood:** usually lighter in complexion and less dense. If your timber comes from this part of the tree, you may see some decreased prices in comparison to heartwood pieces. Sapwood is the 'living' part of the tree, as layers from the outside gradually become the inner layers which die and turn into heartwood.
- **Cambium Layer:** differing from tree to tree, this layer is the tree's protective layer that produces the growth rings inside the tree.
- **Pith:** is the center of the tree which usually carries the tree's nutrients



TRIVIA QUESTION ANSWERS –

1. What is cork?

Answer - Cork is the bark of the Cork Oak tree (*Quercus suber* L). It is an all-natural raw material, with unique properties which give it an unparalleled character. It is light, impermeable to liquids and gases, elastic, compressible, provides thermal and acoustic insulation, a fire retardant and highly abrasion resistant. Furthermore, it is completely biodegradable, renewable and recyclable.

2. Why is the discovery of cells related to cork?

Answer - Cells were discovered in 1665 by Robert Hooke. On observing a sliver of cork under a rudimentary microscope, the English scientist discovered that it was made up of multifaceted cavities, which he called cells (from the Latin *cellula*, small room).

AAW GUEST MEMBERSHIP PROGRAM CONTINUES

By signing up for a complimentary Guest membership, you can have limited access to a sampling of AAW resources for a full **60 days**. You'll be able to explore what the AAW has to offer, kick our tires, and hopefully decide to become a full-fledged, paid AAW member to benefit from everything the AAW has to offer. Sign up at:

<https://www.woodturner.org/page/GuestMemberLanding>.



Woodturning FUNdamentals

<https://www.woodturner.org/page/FUNdamentals>- **New turners — this site is for you.**

The world of woodturning is large, complex, and continually growing. In order to enter that world safely and confidently, you need to learn a few basics: How to sharpen your tools, how use the different tools properly, and above all how to work safely. This site is designed to point you to helpful articles and videos by some of the world's most talented and successful woodturners.

AAW PROJECTS AND ARTICLES AT YOUR FINGERTIPS

Visit the home page: <http://www.woodturner.org/>

WOODTURNING MARKETSPACE

Check out the following page on the AAW website. It contains links to over 120 suppliers of woodturning related items from equipment to tools, supplies, wood, schools, and services.

<http://www.woodturner.org/page=Marketspace2>

You may also want to check out exclusive offers, discounts and promos for AAW members at

<https://www.woodturner.org/page/MktspOffers2>

AAW EDUCATIONAL GRANTS

The application process (for members) is open for 2020 Education Grants through December 31, 2019. Grants may be awarded to individuals, Chapters, and other groups for woodturning education endeavors. Learn more on the AAW website at: <https://www.woodturner.org/page/FinancialGrantApplication>.

AMERICAN ASSOCIATION of WOODTURNERS (AAW) –

If you are an avid woodturner, we would recommend an AAW membership because it offers you many woodturning resources including access to all previous issues of American Woodturner, the AAW Journal of articles, plans and woodturning techniques, six NEW issues of American Woodturner a year along PLUS six issues of the digital Woodturning FUNdamentals and many other learning resources and opportunities. Check them out at <http://www.woodturner.org>

AAW MEMBERSHIP BENEFITS – JOIN or RENEW TODAY

<http://www.woodturner.org/resource/resmgr/MemberBenefits/MemberPublicationsServices20.pdf>



Turn to your Passion

American Association of Woodturners

222 Landmark Center, 75 5th Street W

Saint Paul MN 55102

651-484-9094

inquiries@woodturner.org

WEB SITE: <http://www.woodturner.org/>

Get involved with **YOUR AAW Woodturning Chapter and get more **Bang** for your Bucks!**
You might be surprised just how rewarding this experience can be.