



Des Moines WoodTurners NEWSLETTER



March 2016

A 501(c)(3) Non-profit Organization

Bulletin 2016-03

DES MOINES WOODTURNERS MEETING (AAW Chapter meeting) Saturday, March 12th, 1:00 p.m. at the Woodsmith Store, 10320 Hickman Road, Clive, IA

MULTI-AXIS TURNING will be the subject of our March 12th woodturning meeting. **Roger Nass** will illustrate the principles of various multi-axis turnings. His demonstration will be organized along the format developed by woodturner Barbara Dill. She organized all multi-axis turning into four quadrants. Examples of each quadrant will be shown. A demonstration of one quadrant style will be done and Roger will share tips he's learned along the way. This presentation can be considered a continuation of Roger's January Joyner jig demo when he cut offset arcs on pendants. Once understood, multi-axis turnings can become predictable and repeatable.



Roger Nass with Examples

Barbara Dill once explained, "Traditionally, architectural turnings are spindles made by using one axis. When the spindle is turned on one axis, the outcome is a spindle that's ideal for a chair or an architectural feature. Beads, coves, and straight lines add visual interest." Barbara goes on to say, "Just as traditional spindles are made by changing the shape (cutting beads, coves and/or straight lines), multi-axis spindles are accomplished by changing the axis as well as the profile."

See the two part article, by Barbara Dill, in both the Fall and Winter 2007 issues of AAW's American Woodturner. AAW members have access to all back issues at the AAW web site. (Publications - American Woodturner – Archives)

Of course we'll have our regular Show 'n Tell for both Beginners and all others. Everyone is encouraged to bring an item they've turned, big or small, finished or unfinished, and share your experience with our members. We'll also continue a voluntary critique session for those who would like to learn what others see in their turned objects, both pro and con. It's a great way to make advances in your work. See you Saturday.....

FEBRUARY MEETING REVIEW – **Rob Wallace** presented a variety of different Gizmos and Gadgets that creative woodturners have made from re-purposed items, as well as several "built-from-scratch" accessories to help with different woodturning techniques. These ideas were gleaned from woodturners located all across the country over a period of several years. Despite the green shade cast over the video monitors (all beyond our control), Rob provided clever and inexpensive ways to provide a variety of woodturning solutions. Thank You Rob!!



WOODSMITH PARKING - PLEASE REMEMBER when arriving at Woodsmith Saturday, park at the far East and North sides of their parking lot. This leaves the areas closest to the entrance door for their normal Saturday store customers. If you have items to drop off for our meeting, drop them off at the entrance and then go park in the designated areas.

Woodsmith is gracious to let us use their facility. Please respect their parking rules so their normal customers have easy access to the store on one of their busiest day of the week. Thanks for your cooperation.

PASSING OF MEMBER HARLAN (PAT) PATTERSON – Pat died Thursday past from a sudden and unexpected heart attack. He always offered a helping hand at Chapter functions. We'll miss his friendliness, willingness to pitch in where needed, and his enthusiasm for woodturning. Services were held earlier this week.

WELCOME NEW MEMBERS – Arlyn (Slim) Picken, Urbandale; Doug Lundberg; WDM

FIRST MONTHLY MEMBER NETWORKING GATHERING

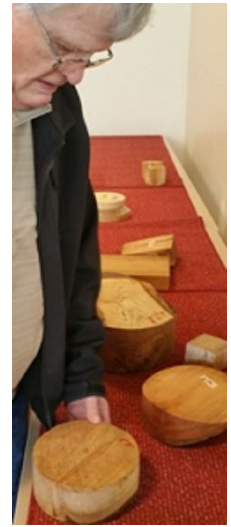
was attended by approximately thirty-five enthusiastic members. So enthusiastic they gobbled up three tables full of turning wood in record time.



That included a splendid array of thick, clear mahogany and some very green walnut bowl blanks and many other assorted species and sizes. Thanks to **Jim Hogue** for the majority of donated wood.

Because of the arrangements we have with the Scout Center, we'll need the time between 9:00 and 9:30 to ready the room with tables

and chairs, price the wood that comes in, make coffee and set out refreshments. We'll open the doors to the room at 9:30 and no wood will be sold until 9:45. Our next gathering will take place on Wednesday, March 23rd from 9:30 till 11:30. Watch for e-mail meeting reminder and maps.

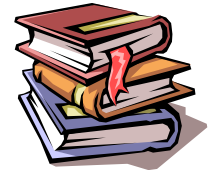


IOWA STATE FAIR BOOTH –

I know it sounds like it's a long way off, but it will be here before we know it! We're in need of 25 to 35 members to help man the booth. Perhaps our biggest need will be for volunteers to assist visitors, demonstrate how products we sell are used, answer questions about the Chapter and collect money when merchandise is sold. If you enjoy visiting with people and sharing your enthusiasm of woodturning, it will be a fun experience. We'll have the sign-up sheet at our March meeting. Please sign-up if you have an interest. If you'll work both the 9 to 2 and 2 to 7 shifts (with time off for two meals), we'll provide the fair entrance ticket. Contact **Dick Meuler** at dmwoodturners@gmail.com or call **991-8111** for more info or to volunteer. The fair runs from August 11th to the 21st.

WOODTURNERS LIBRARY NEWS -

Take a look at our growing library of woodturning books and videos at our monthly demonstration meetings at Woodsmith. You'll find the library just outside Woodsmith's kitchen area. **Don Skarin** or one of his assistants can help you.



REMEMBER – Member **Mark Foust** has produced a series of high quality DVD's from most of our 2014, 2015 & 2016 meetings by combining the output of two cameras and syncing the audio into seamless DVD videos. If you need a refresher on any of the demonstrations or if you missed the meeting, check out the DVD in the library. Library contents can be found on our web site at:

http://www.dmwoodturners.com/?page_id=84

Latest library DVD additions

- **Using Metallic Paints and Aging Patinas** by **Rob Beattie** and **Dave Yearian** (Jan 2016 meeting)
- **Aesthetics and Properties of Wood** by **John Jordan (2 DVD Set)** (donated by member **Donna Byers**)

If you have woodturning oriented material you'd like to donate to the Chapter library, bring them to a meeting and give them to Don or one of the assistants. Please enclose a note with your name so we know who donated them. Remember, **DO NOT drop returned library items in Woodsmith's front lobby**. That box is for the Des Moines Woodworkers Assn. use only. Instead, bring your items to the meeting room and return them to our library.

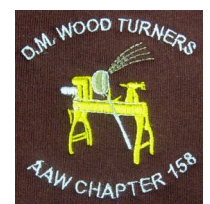
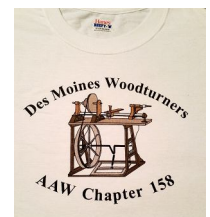
PLEASE return your checked-out library material so others can use them too.

DES MOINES WOODTURNERS WEARABLES – Rob Beattie

Members wanting Des Moines Woodturners logos embroidered on clothing need to purchase shirts, sweatshirts, turning smocks, etc. of their choice and style. These **BRAND NEW** and **UNWASHED** items can then be brought to either of our monthly meetings. Be sure to attach a note with your name to the collar of each garment submitted. When twelve are collected to meet minimums, they will be taken to the embroiderer. Costs to add the standard logo are \$8.00 per item. Personalized names can also be added for an additional \$6.00 / garment.

When embroidery work is completed, garments can be picked up on the 4th Wed networking meeting at the Scout Center or make arrangements with **Rob Beattie** to PU at his home.

T-Shirts illustrating a Treadle Lathe are also available. Summer will be back soon! They cost \$16 ea for size S, M, L and XL. Add \$1 for each additional larger size (2X=\$17, 3X=\$18, etc.) Once we have orders for at least 12 T's, we place our order. Chat with **Rob Beattie** if you have questions. **282-4532** or e-mail at beattie.r@mchsi.com.



MEMBER **BRIAN SIMMONS** DEMONSTRATING AT AAW SYMPOSIUM IN ATLANTA

Bowls 2 Ways: Brian will turn both an end-grain bowl and a face-grain bowl and discuss the techniques for each. He'll also demonstrate **An Inside Peek at Hollow Turning** where he'll cut away some of the mystery around hollowing. You'll be able to see the basic steps of hollowing through a narrow opening using some basic tools that you can easily fabricate and/or purchase. Congratulations on being accepted Brian!!!!

MEMBER BUY-SELL SERVICE – Do you have woodturning or woodworking related items you want to buy or sell? Send an e-mail with particulars to dmwoodturners@gmail.com and we'll send it out to all members with e-mail addresses on record.

Only about 4 weeks left until the lawn will need mowing - Just a fact

If you **SEE** something,
SAY something

Have you had any of these changes?

PHONE NUMBER change?

E-MAIL address change?

MAILING address change?

Send changes to DMWoodTurners@gmail.com

or call 515-991-8111

CHAPTER DIRECT WEB LINKS – Below are a few direct links to our Chapter web site.

- 📅 Calendar of Events - http://www.dmwoodturners.com/?page_id=2
- 📄 Woodturning Article and Plan Links - http://www.dmwoodturners.com/?page_id=90
- 📖 Chapter Library contents - http://www.dmwoodturners.com/?page_id=84
- 👤 Contact board members and volunteers - http://www.dmwoodturners.com/?page_id=126
- 📄 Download Membership Application form - http://www.dmwoodturners.com/?page_id=399

Get involved with **YOUR** AAW Woodturning Chapter and get more Bang for your Bucks!

What's Ahead – Chapter and AAW Activities

- ☒ Sat, March 12, 2016 – **Des Moines Woodturners**, Multi-Axis Turning, Roger Nass at Woodsmith, 1:00 p.m.
- ☒ Wed, March 23, 2016 – **Des Moines Woodturners** Informal Networking meeting, 9:30 – 11:30 a.m.
Boy Scout Center, 6123 Scout Trail, Des Moines, IA 50321 (1st building south of Loffredo Produce off SW 63rd St.)
- ☒ Sat, April 16, 2016 – **Des Moines Woodturners** “Coffee Mug from Bowling Pin” at Woodsmith, 1:00 p.m.
- ☒ Wed, April 27, 2016 – **Des Moines Woodturners** Informal Networking meeting, 9:30 – 11:30 a.m.
Boy Scout Center, 6123 Scout Trail, Des Moines, IA 50321 (1st building south of Loffredo Produce off SW 63rd St.)
- ☒ May 12 - 14, 2016 – **Utah Woodturning Symposium**, Orem/Provo, UT <http://utahwoodturning.com/>
- ☒ Sat, May 14, 2016 – **Des Moines Woodturners** meeting & demonstration at Woodsmith, 1:00 p.m.
- ☒ Wed, May 25, 2016 – **Des Moines Woodturners** Informal Networking meeting, 9:30 – 11:30 a.m.
Boy Scout Center, 6123 Scout Trail, Des Moines, IA 50321 (1st building south of Loffredo Produce off SW 63rd St.)
- ☒ June 9 - 12 – **AAW 30th Annual Woodturning Symposium**, Atlanta, GA www.woodturner.org/?page=2016
- ☒ Wed, June 22, 2016 – **Des Moines Woodturners** Informal Networking meeting, 9:30 – 11:30 a.m.
Boy Scout Center, 6123 Scout Trail, Des Moines, IA 50321 (1st building south of Loffredo Produce off SW 63rd St.)
- ☒ Fri, July 1 – **Deadline for purchasing entry tickets for Iowa State Fair competition**
- ☒ July 22 - 24 – **Turn-On! Chicago 2016 Symposium**, Mundelein, IL <http://turnonchicago.com/>
- ☒ Wed, July 27, 2016 – **Des Moines Woodturners** Informal Networking meeting, 9:30 – 11:30 a.m.
Boy Scout Center, 6123 Scout Trail, Des Moines, IA 50321 (1st building south of Loffredo Produce off SW 63rd St.)
- ☒ Sat, August 6, 2016 – **Deadline for delivering Iowa State Fair woodturning entries (9 to 4)**
- ☒ August 11 – 21 – **Iowa State Fair Des Moines Woodturners** demonstration booth and turning sales
- ☒ August 26 - 28 – 25th **Annual SWAT Symposium**, Waco, TX <http://www.swaturners.org/>
- ☒ Wed, August 27, 2016 – **Des Moines Woodturners** Informal Networking meeting, 9:30 – 11:30 a.m. (Unconfirmed)
Boy Scout Center, 6123 Scout Trail, Des Moines, IA 50321 (1st building south of Loffredo Produce off SW 63rd St.)
- ☒ Sept 16-18, 2016 - **Rocky Mountain Woodturning Symposium**, Loveland, CO <http://www.rmwoodturningsymposium.com>
- ☒ **The Fall Des Moines Woodturners** schedule to be announced in May

Bring a co-worker, friend, or neighbor you think might enjoy taking up woodturning.....

FACT: Daylight Savings time starts again this coming Sunday, March 13th. Spring ahead or be late!!

DISCOUNT SUPPLIER INFO

Woodsmith Store at 10320 Hickman Road, Clive offers 10% discount to members with the exception of sale items and power tools or things with a cord. If you're in doubt, ask a sales associate. M-F 9 to 7, Sat 9-5, Sun 11-4 Phone: 254-9494



Tandy Leather Factory at 5041 NE 14th St., Des Moines offers near 50% discounts on non-sale items such as dyes, adhesives, leather, leather making supplies, tooling and lots more. Current hours are 9 till 6 Mon thru Fri and 9 till 4 on Sat. Phone: 265-6521



True Value Hardware at 63rd and Grand in WDM offers a 10% discount on most non-sale items. If you're in doubt, ask a sales associate. Known for having nearly anything you'd ever want especially in hardware and fastener area. Hours Mon thru Fri 7 to 8, Saturday 7 to 6 and Sunday 9 to 5. Phone: 279-9905.

Acme Tools at 629 SW 9th St. in Des Moines offers a 10% discount to members with the exception of sale items and power tools or things with a cord. If you're in doubt, ask a sales associate. M-F 7 to 5:30, Sat 8-5:30 Ph: 244-4189

Before they ring you up, show discount suppliers your **Des Moines Woodturners** membership card.

BUY LOCAL when you can, Mail Order when you have no other choice!!

Hartville Tool - <http://www.hartvilletool.com/> 800-345-2396 15% discount off regularly priced items. Free shipping on all orders, no minimum purchase. See following link for ordering instructions.
<http://www.dmwoodturners.com/wp-content/uploads/2015/11/Hartville-Tool-Club-Discount-Program-Buying-Instruction.pdf>

Woodcraft - 8645 Bluejacket Road, Lenexa, KS 66214, Phone: (913) 599-2800, Email: kansas-retail@woodcraft.com WEB: <http://www.woodcraft.com/stores/store.aspx?id=316>
10% discount supplier for woodturning tools, supplies & accessories not sold locally. Show your DMWT membership card in store for discount on most items except tools with a cord or battery and other selected premium and sale items. Only valid for in-store purchases.

<p style="text-align: center;">Des Moines Woodturners, Inc. E-mail: dmwoodturners@gmail.com Web: http://www.dmwoodturners.com</p> <p>2016 OFFICERS</p> <table style="width: 100%; border-collapse: collapse;"> <tr> <td style="width: 30%;">President</td> <td style="width: 40%;">Dick Meuler</td> <td style="width: 30%; text-align: right;">991-8111</td> </tr> <tr> <td>Vice President</td> <td>Daniel Henderson</td> <td style="text-align: right;">712-249-8888</td> </tr> <tr> <td>Secretary</td> <td>Donna Byers</td> <td style="text-align: right;">360-5894</td> </tr> <tr> <td>Treasurer</td> <td>Jim Hogue</td> <td style="text-align: right;">315-462-3971</td> </tr> </table> <p>2016 BOARD MEMBERS</p> <table style="width: 100%; border-collapse: collapse;"> <tr> <td style="width: 30%;">Education Chair</td> <td style="width: 40%;">Rob Beattie</td> <td style="width: 30%; text-align: right;">282-4532</td> </tr> <tr> <td>Program Chair</td> <td>Jack Rolison</td> <td style="text-align: right;">641-683-5647</td> </tr> </table>	President	Dick Meuler	991-8111	Vice President	Daniel Henderson	712-249-8888	Secretary	Donna Byers	360-5894	Treasurer	Jim Hogue	315-462-3971	Education Chair	Rob Beattie	282-4532	Program Chair	Jack Rolison	641-683-5647	<p>2016 VOLUNTEERS</p> <p>A-V Producer Mark Foust Cameras: Suzie Laurence, Tom Baker BU-Daniel Henderson</p> <p>Greeter Vikki Morain. Asst Donna Byers</p> <p>Librarian Don Skarin BU-Daniel Henderson Assistants: Mike Lustig & Ray Nelson</p> <p>Maintenance Dave Yearian and LeRoy Monson</p> <p>Refreshments NEED VOLUNTEERS, BU Dan England</p> <p>Webmaster Jim Bergeson</p> <p style="text-align: center;">Membership Brochure – Click Link http://www.dmwoodturners.com/?page_id=399</p>
President	Dick Meuler	991-8111																	
Vice President	Daniel Henderson	712-249-8888																	
Secretary	Donna Byers	360-5894																	
Treasurer	Jim Hogue	315-462-3971																	
Education Chair	Rob Beattie	282-4532																	
Program Chair	Jack Rolison	641-683-5647																	

“80% of success is showing up.” *Woody Allen*

AMERICAN ASSOCIATION of WOODTURNERS (AAW) - If you are an avid woodturner, we would recommend an AAW membership because it offers you many woodturning resources including access to all previous issues of American Woodturner, the AAW Journal of articles, plans and woodturning techniques, six NEW issues of American Woodturner a year along PLUS six issues of the digital Woodturning FUNDamentals and many other learning resources and opportunities. Check them out at <http://www.woodturner.org>

AAW MEMBERSHIP BENEFITS – JOIN or RENEW TODAY

<http://www.woodturner.org/resource/resmgr/MemberBenefits/MemberPublicationsServices20.pdf>



Turn to your Passion

American Association of Woodturners
222 Landmark Center, 75 5th Street W, Saint Paul MN 55102
651-484-9094 inquiries@woodturner.org
WEB SITE: <http://www.woodturner.org/>