



Des Moines WoodTurners Meeting Announcement



Rolison

Dowler

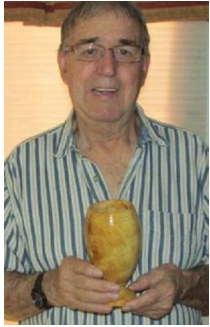
Simmons

September 2014

AAW Chapter 158

Bulletin 2014-09

DES MOINES WOODTURNERS MEETING (AAW Chapter 158) Saturday, September 13th at 1:00 p.m., at the Woodsmith Store. Program Chair Jack Rolison will show us some things he learned at this years AAW Symposium in Phoenix.

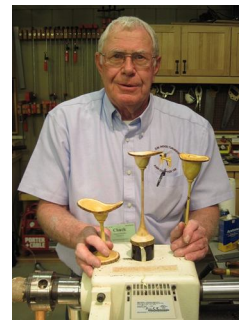


Jack will bring a pre-turned hollow vessel and show us how he dyes his projects and then using a very pure CA glue, he'll create a spectacular, high-gloss finish over the dye.

Don't forget to bring your summer turning projects to Show and Tell and if you had entries in the Iowa State Fair, please bring those too! Of the thirty woodturning ribbons awarded, 28 were won by our Chapter members.

MAY MEETING REVIEW – Chapter member and Education Chair

Chuck Dowler demonstrated how to turn natural edge goblets using small branch crotch wood. As usual, Chuck's methodical process and light touch produced perfect results. We hope you tried some yourself this summer and bring the results to the September Show and Tell.



WOOD & MAGAZINE SALES – In September look for Jim Hogue and Chuck Dowler selling turning stock and various great magazines that seem to never go out-of-date. Sales are normally brisk so come early and take advantage of the bargain prices. All proceeds (less IA SIs Tx) go to help the chapter grow.



BASIC WOODTURNING CLASSES STARTING BACK UP – Gary Kelley, Jim Pierce, David Rabe and Chuck Spittler began the first Basic Woodturning class of the fall on August 30th and will complete it by the end of September. Education Chair Chuck Dowler is directing the training course with instructors Dick Meuler, Bob Blank, Dave Yearian, Rob Beattie & Jim Hogue.

Members wanting a basic woodturning class or woodturning help should notify Chuck Dowler of their needs.

WOODTURNERS LIBRARY NEWS – Lots of new media has been added to the library due to donations from the family of Roy Moore, a three DVD set of Trent Bosch "Vessels of Illusion" donated by Chuck Haas, and completed video production of past meetings. Our A-V Specialist Mark Foust has produced some very impressive DVD's of the following meetings, all of which will be available for check-out:

Roger Nass – "Green Wood: From Log to Lathe" (Jan 2014)

Brian Simmons, "Cross-Grain and End-Grain Bowls" (Feb 2014)

Note: Jimmy Lewis March demo not available due to video technical issues

Will Zitterich, "Smooth and Shiny Vessels" (a 2-disk finishing & hollowing mini-seminar) (Apr 2014)

Just a reminder to return any books or DVD's you've checked out in the past. Librarian Don Skarin is STILL looking for a volunteer or two to help staff the library during Saturday meetings. See Don at the September meeting or drop an e-mail to dmwoodturner@gmail.com if you're willing to lend a hand in keeping our library running.

If you have woodturning oriented original VHS tapes, DVD's, books or magazines you'd like to donate to the chapter, bring them to a meeting and give them to Librarian Don Skarin. Remember, **DO NOT** drop returned library items in Woodsmith's front lobby. That box is for the Des Moines Woodworkers use only. Instead, bring your items to the meeting room and turn them in to the librarian.

NEW MEMBERS – Since our last new member report, the following individuals have joined the chapter. Please welcome them when you see them at meetings. Pat Fisher, Colo; Becky Rogers, Grimes; Tom Brumback, Alleman; Dave Everett, Des Moines and Charlie Porter, Ellston.

PEEK AHEAD TO OCTOBER MEETING – Prepare to be AMAZED at the creative project member Daniel Henderson will demonstrate at the October 14th meeting! Mark your calendar.

IOWA STATE FAIR – Major milestones were made at the Iowa State Fair this year. The Cultural Center, home of the woodcarving, woodturning and woodworking displays and judging, was totally overhauled in several ways. First, air conditioning was added. Second, they opened the third floor and moved Photography and Fine Arts displays there. Third, they removed the doll houses from the wood display area and opened the entire room to carved, turned and otherwise built wood projects.

Because of the added room, the Des Moines Woodturners were invited to demonstrate woodturning during the fair.....ALL ELEVEN DAYS! Using 4 hour shifts and needing to cover from 9 to 9 each day, that meant 33 shifts. At two members per shift, that's 66 slots to man the demonstration booth. With the help of these 29 people, it was done and done well, but a number of volunteers were way overworked. Our sincere thanks to each and every one of the following for making this debut appearance a fantastic one.

Rob Beattie	Chuck Dowler	Dick Meuler	Dave Yearian	Brian Simmons
Will Zitterich	Jack Kennedy	Tad Tadlock	Duane Rozendaal	Donna Byers
Don Harvey	Ben Swartz	Russ Dent	Craig Wyckoff	Tom Van Hon
Bob Blank	LeRoy Monson	Mark Foust	Lee Burns	Roger Nass
Rob Wallace	Daniel Henderson	Ray Nelson	Greg Ellyson	Dean Fiene
Nate Gibson	Rich Voss	Don Skarin	Paul Miller	

Our extra special thanks to Jim Hogue for making the contacts that made this opportunity possible. He was also instrumental in getting the judged woodturning categories expanded from one to ten. I understand we're invited back to demonstrate again next year. We'll need more help to lessen the load on many who stepped up to take multiple shifts and maintain day to day continuity. I hope each of you will consider volunteering some time to help next year. You can demonstrate or help man the booth, talk with visitors about woodturning and sell woodturned items. Mark your calendar now to give some days between Thur August 13 thru Sun August 22, 2015, to come out and have some fun and do or talk woodturning at the fair. It's a blast!

If you missed it, here's a link of a woodturning demo and member interviews with Iowa Public Television at the fair this year: http://www.iptv.org/fair/story.cfm/story/sf14_20140811_1_04/video

IOWA STATE FAIR COMPETITION – Here are chapter members who earned a ribbon in one of the various WOOD division classes on 2-North of the Cultural Center, per the State Fair website. Congratulations to everyone. Please consider entering your projects in 2015. Let's show lowans even more of what we do!

WOODTURNING	FIRST	SECOND	THIRD	HONORABLE MENTION
Bowl	Dick Meuler	Jim Hogue	LeRoy Monson	-
Box	Jim Hogue	Jim Hogue	Jim Hogue	-
Hollow Vessel	Rob Beattie	Rob Wallace	Jack Rolison	-
Household Item	Rob Beattie	Rob Beattie	(non-member)	-
Jewelry	Dick Meuler	Dick Meuler	Dick Meuler	-
Pens-Stoppers-etc	LeRoy Monson	Chuck Spittler	Nate Gibson	-
Seasonal (Ornaments)	Dick Meuler	Walter Smith	Walter Smith	-
Segmented	Walter Smith	Ben Swartz	(non-member)	-
Stylized	Jack Rolison	Jack Rolison	Daniel Henderson	-
Other	LeRoy Monson	Rob Beattie	Peggy Smith	-
WOODCARVING				-
Stylized human figure	(non-member)	Chuck Spittler	-	-
Roughouts, human	(non-member)	Jim Hogue	(non-member)	-
Human Caricature	(non-member)	(non-member)	-	Walter Smith
WOODWORKING				
Wood Inlay	Dave Rabe	(non-member)	Dick Meuler	-
Furniture item	Tom Brumback	Tom Whalley	(non-member)	-
Table	(non-member)	(non-member)	Tom Brumback	-
Clocks	Dave Rabe	-	-	-
Wood Toy	Tom Whalley	(non-member)	(non-member)	Tom Whalley
Senior Project	Rob Beattie	Ben Swartz	(non-member)	(non-member)
BEST OF SHOW	Tom Brumback	(non-member)	(non-member)	LeRoy Monson

NOMINATING COMMITTEE - Fall is election time and we are looking for a few volunteers to run for office. Contact Rob Beattie rbma81@mchsi.com or Dave Yearian sawdustmfg@msn.com. Be involved with **YOUR** woodturning group, don't just sit on the sidelines.

MEMBER BUY-SELL SERVICE –FOR SALE - DeWalt 10” miter saw, \$150 excellent condition. If you have an interest, call Jack Rolison at 641-683-5647 and he'll arrange for you to see it at the meeting.

Do you have woodturning or woodworking related items you want to buy or sell? Send an e-mail with particulars to dmwoodturner@gmail.com and we'll send it out to all members with e-mail addresses on record.

WORDS TO TURN BY - Some Light Along the Path

Reprinted with permission of author Robert Gulley. rgulley@wood-elegance.com Originally appeared in Woodturning Design

Woodturning has its own language, like every field of endeavor. Some words and concepts may be familiar depending on one's background in woodworking, but many of the terms are specialized, and frankly, a bit strange-sounding! Continued from the May meeting bulletin.

Burnishing - Burnishing usually refers to polishing wood by using friction heat. One method is to hold a handful of shavings against the spinning wood, preferably shavings from the turning itself. Burnishing leaves a smooth surface and often enhances the natural color of the wood. It can be used as an alternative to sanding, but only in the case where the wood is reasonably smooth already. Unlike sandpaper, wood shavings do not really act as a cutting tool.

Unfortunately, burnishing can happen quite by accident with regular sanding when the sandpaper gets too full of wood dust. Rather than cutting the wood as sandpaper should, the wood dust acts like the shavings described above and burnishes the wood. Tooling rubbed on wood instead of cutting also causes un-intentioned burnishing.

Burr - Not to be confused with a burl, a burr refers to the slightly raised edge of metal left by a grinding wheel after sharpening. This edge can either be used as a cutting edge (as with a scraper) or it can be honed off for a smooth surface. Some folks like using the burr for their smoothing cuts, and it does work well on round-nosed scrapers, for example. The smoothest cut will come from a truly smooth edge, so final cuts often require the tool to be honed completely smooth.

A burr raised on a gouge is usually naturally smoothed by the spinning wood in all but the softest cuts. A bowl gouge used for roughing down a bowl blank would lose any burr almost immediately.

However, and this is important, an uneven burr may leave undesirable marks on a piece when you are nearing completion. Some turners like to work with burrs, while others prefer to take them off. I fall into the latter camp. But you can decide for yourself, by trying different cuts to see the results. If you are capable of getting a consistent burr which will not come off easily, you may like the effect.

Center(s) - You will see lots of references to centers in woodturning literature, and you would do well to get comfortable with the variations of this terminology, Turning between centers refers to turning pieces of wood held in place by a center in the headstock (using a spur drive, for example), and a center in the tailstock, sometimes referred to as a live center. This distinguishes it from turning done where pieces are held on a faceplate or held in a chuck.



A live center in the tailstock is so called because the center rotates with the wood from the pressure of the headstock. In olden days the center did not turn and something like wax was used on the center point to try to reduce the squeal of the wood rotating against an immobile center. With modern live centers this annoyance is avoided, and less marking is apparent on the

wood. While the marking is less, there is still a point and/or a ring impression left on the wood which must be removed from the final turning, but this marking is relatively light.

There are various common centers which may be used in the lathe, such as a cone center, a pin center, or a cup center, and variations of these designs. These merely reflect the shape of the center which comes in contact with the wood.

The drive center is called this because using a spur or other means of gripping the wood the power from the motor is transferred to the wood allowing it to spin.

As mentioned above, turning between centers involves turning a piece while held between the headstock and tailstock, usually with the grain running parallel to the bed of the lathe. Some folks use a chuck to hold the headstock end even for spindles, but this is more commonly done when making goblets or vases.

Like faceplate turning to be discussed later, the meaning of turning between centers has blurred slightly, so it is important to distinguish which method is being discussed from the context of the article.



AMERICAN WOODTURNER – Journal of the American Association of Woodturners - June 2014

Articles of general interest include; Water for Wood by Don McIvor describing various water-based finishes for woodturned items; Scroll Chucks and Their Maintenance by Geoff Whaling provides a basic understanding of how to care for and disassemble your four-jaw chucks; Safety Matters from the Eye of a Survivor by Lynne Yamaguchi is a first person account of a terrible woodturning accident that could have taken her life; Light and Fan Pulls by Mike Peace illustrates ways to make chain pulls and practice your turning skills in the process. Join AAW and enjoy this bi-monthly publication.

AAW Members – See the latest FREE FUNDamentals digital booklets at:

<http://www.woodturner.org/?page=FUNDamentalsRes>

INTERESTING FACTOID – The longest board in the world (2002) is in Poland and measures 120' 10".

DISCOUNT SUPPLIER INFO – Woodsmith Store at 10320 Hickman Road, Clive offers 10% discount to all members with the exception of sale items and power tools or things with a cord. If you're in doubt, ask a sales associate. M–F 9 to 7, Sat 9-5, Sun 11-4 254-9494



Tandy Leather Factory at 5041 NE 14th St., Des Moines offers near 50% discounts on non-sale items such as dyes, adhesives, leather, leather making supplies, tooling and lots more. Current hours are 9 till 6 Mon thru Fri and 9 till 4 on Sat. Check them out. 265-6521



***NEW* True Value Hardware** at 63rd and Grand in WDM offers a 10% discount on most non-sale items. If you're in doubt, ask a sales associate. Store is known for having nearly anything you'd ever want especially in the hardware and fastener area. Hours Mon thru Fri 7 to 8, Saturday 7 to 6 and Sunday 9 to 5. Check them out. 279-9905. Thanks to member Chuck Heiken for arranging this supplier.

Before they ring you up, show these suppliers your Des Moines Woodturners membership card.

Have other favorite suppliers you'd like added? E-mail us at dmwoodturner@gmail.com

HELP NEEDED - Running a chapter our size is easy work when enough interested parties put their heads together and pitch in to work as a team. We have an incredible core group but would like to include you if you have a strong passion for woodturning and enjoy the camaraderie that goes along with working with others who have similar interests. And we learn a great deal from one another as well.

We'd like to see more members providing monthly meeting demonstrations, help with simple tasks like setting up and breaking down monthly meetings and helping man the library. If you have computer or web skills we seriously need someone to set-up a web site for us with a direct domain name, assistance getting our 501(c)(3) application submitted properly, providing publicity throughout the community, and more. Please consider offering some of your time to help the chapter grow and provide the training, programming and community outreach so many of us have come to enjoy. E-mail dmwoodturner@gmail.com and tell us how you'd enjoy helping. We're eager to hear from you!!



Turn to your Passion

<http://www.woodturner.org/>

American Association of Woodturners
222 Landmark Center, 75 5th Street W, Saint Paul MN 55102
651-484-9094 inquiries@woodturner.org

Des Moines Woodturners, Inc. AAW Chapter 158

E-mail: dmwoodturner@gmail.com

Web: <http://dmwoodturner.wordpress.com>

OFFICERS

President	Paul Miller	276-6943
Vice President	Dick Meuler	967-7686
Secretary	Donna Byers	360-5894
Treasurer	Jim Hogue	515-462-3971

BOARD MEMBERS

Education Chair	Chuck Dowler	515-490-4988
Program Chair	Jack Rolison	641-683-5647

VOLUNTEERS

A-V Specialist	Mark Foust
Greeter	Vikki Morain or Donna Byers
Librarian	Don Skarin (Assistants needed)
Maintenance	Dave Yearian and LeRoy Monson
Refreshments	Ron Jacobson or Donna Byers
Webmaster	Open Position, help needed

Membership Brochure – Click Link

http://dmwoodturner.files.wordpress.com/2013/12/dmwtbroch_tri-fold_2014.pdf